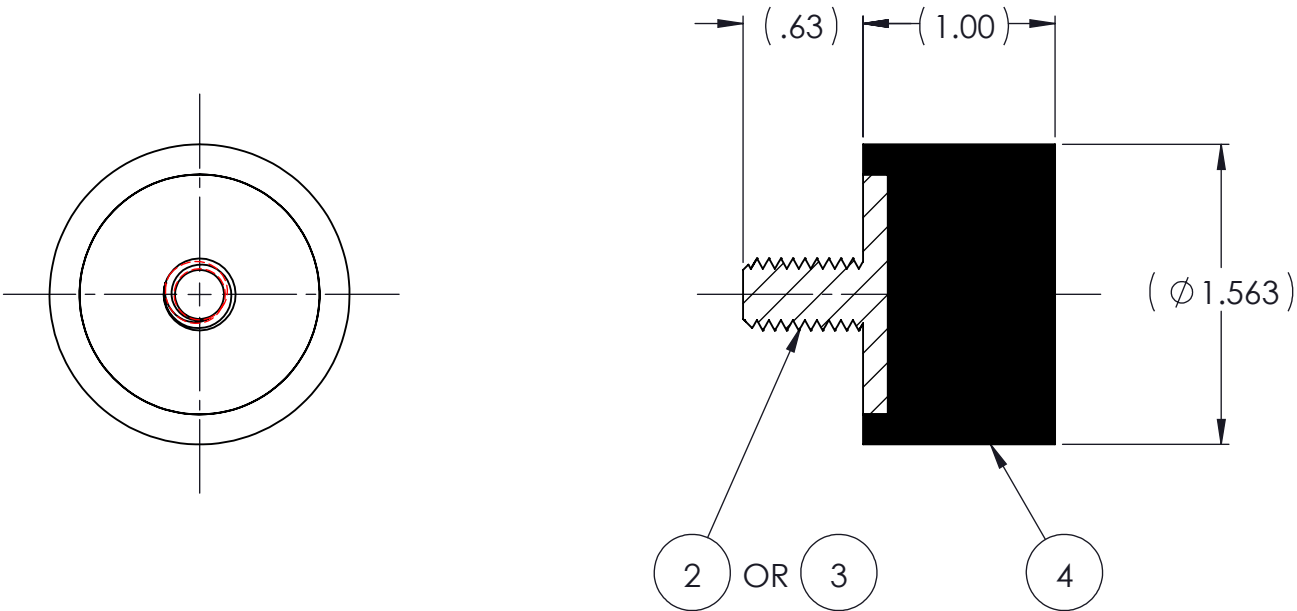
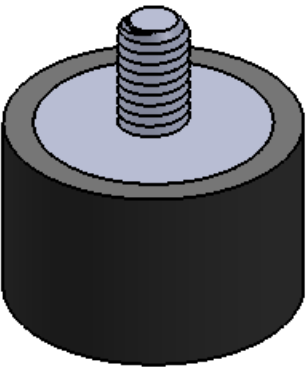


REVISIONS			
REV.	DESCRIPTION	DATE	APPROVED
1	INITIAL RELEASE OF DRAWING	10/1/2014	BS
2	REVISE NOTE 3 TO SHOW M10 X 1.5, WAS M10 X 1.0.	10/9/2014	BS



NOTES:

- 1 MATERIAL: ELASTOMER AND DUROMETER OF 40, 50, 60, OR 70 TO BE SPECIFIED.
- 2 ALL DIMENSIONS ARE REFERENCE.
- 3 AVAILABLE WITH THREADS OF 3/8-16 UNC AND M10 X 1.5.

PROPRIETARY AND CONFIDENTIAL THE INFORMATION CONTAINED IN THIS DRAWING IS THE SOLE PROPERTY OF KARMAN RUBBER. ANY REPRODUCTION IN PART OR AS A WHOLE WITHOUT THE WRITTEN PERMISSION OF KARMAN RUBBER IS PROHIBITED.	SIGNATURE		DATE	UNLESS OTHERWISE SPECIFIED: DIMENSIONS ARE IN INCHES TOLERANCES: .X = .XX = ± 0.031 .XXX = ANGLES = ± 1° INTERPRET GEOMETRIC TOLERANCING PER: ASME Y14.5M-1994
	DRAWN	B. SENECAL	10/01/2014	
	CHECK	S. BROWN	10/01/2014	
	ENGR	B. SENECAL	10/01/2014	
	QA			
	STRESS			
	APPR			

KARMAN RUBBER
VIBRO-INSULATORS®
FOR CONTROLLING NOISE, SHOCK & VIBRATION

SIZE

B

DO NOT SCALE DRAWING

CAGE CODE

TITLE: K137 SERIES VIBRO-INSULATOR WWW.KARMAN.COM			
DWG. NO. K137		REV 2	
SCALE: 1:1	WEIGHT: 3.0 OZ.	SHEET 1 OF 1	

AR	ELASTOMER	K137-4	1	4
1	MK370M10	MK370M10		3
1	MK370-BB	MK370-BB		2
	K137	K137		1
QTY.	DESCRIPTION	PART NUMBER	MATERIAL OR NOTES	ITEM